

Once again, Salice establishes an innovation leadership role with the introduction of the F70 concealed drawer runner. Recognizing the trends towards higher load capacities and diverse applications, the Salice F70 addresses these needs. With a load rating of 170lbs, the F70 meets the most demanding situations presented in cabinetry design for kitchens, furniture, casework, and office furniture requirements.

All F70 slides are full extension and are available in both Smove soft close or Push to open movement. Multiple adjustments are achieved by mechanical functions in the locking clips.

As with the full Futura family of slides, the F70 meets the highest standards with a ANSU/BHMA Grade 1 performance rating. As with all Salice products, the F70 slide features a lifetime warranty and is 100% made in Italy.

### F70 Smove full extension, soft close for 12mm (1/2") to 16mm (5/8") drawers

Specifications when installed using a metal rear mount socket (Face Frame Cabinets)					
Item number	Drawer length	Runner length	Minimum inside cabinet depth with metal rear socket	Maximum inside cabinet depth with metal rear socket	Minimum inside cabinet depth
G7U6S381XXB	381mm (15")	392mm	402mm	446mm	401mm
G7U6S457XXB	457mm (18")	468mm	480mm	522mm	477mm
G7U6S533XXB	533mm (21")	544mm	557mm	598mm	554mm

**Please note: Any load over 75lbs, will require a spacer block in addition to the rear socket.**

### Specifications when installed in frameless cabinets or face frame cabinets blocked out

Item number	Drawer length	Runner length	Minimum inside cabinet depth.	<p style="text-align: center;"><b>Maximum 6 Way Adjustability</b></p> <p>The Futura F70 drawer slide, as with other Futura slides is fully adjustable. <b>Depth</b> and <b>lateral</b> adjustments are integrated in the front clip. <b>Height</b> adjustment is built into the slide.</p>
G7U6S457CXB	457mm(18")	468mm	480mm	
G7U6S533CXB	533mm (21")	544mm	554mm	
G7U6S610CXB	610mm (24")	621mm	630mm	
G7U6S686CXB	686mm (27")	697mm	709mm	
G7U6S762CXB	762mm (30")	773mm	788mm	

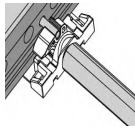
### F70 Smove Specifications

- 170lb static load capacity
- Synchronized, full extension
- Lengths: 15" - 30" In 3" increments.
- Suitable for 1/2" to 5/8" drawer material
- Enhanced soft close action
- Tool free depth, lateral and height adjustments. Optional tool-free tilt adjustment.
- Frame or frameless cabinet applications
- Lifetime warranty, **Made in Italy**

### F70 Push full extension, for 12mm (1/2") to 16mm (5/8") drawers thickness

Specifications when installed using a metal rear mount socket (Face Frame Cabinets)					
Item number	Drawer length	Runner length	Minimum inside cabinet depth.	Max. inside depth w/metal socket	Minimum inside cabinet depth
G7U6P381XXB	381mm (15")	392mm	402mm	446mm	401mm
G7U6P457XXB	457mm (18")	468mm	480mm	522mm	477mm
G7U6P533XXB	533mm (21")	544mm	557mm	598mm	554mm

### Specifications when installed in frameless cabinets or face frame cabinets blocked out

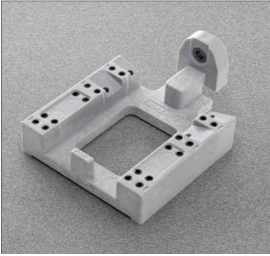
Item number	Drawer length	Runner length	Minimum inside cabinet depth.	 <p>To maximize the performance of an extra wide Push drawer, a synchronization bar may be needed. Please see below.</p>
G7U6P457CXB	457mm(18")	468mm	480mm	
G7U6P533CXB	533mm (21")	544mm	554mm	
G7U6P610CXB	610mm (24")	621mm	630mm	
G7U6P686CXB	686mm (27")	697mm	709mm	
G7U6P762CXB	762mm (30")	773mm	788mm	

### F70 Push Specifications

- 170lb static load capacity
- Synchronized, full extension
- Lengths: 15" - 30"
- Suitable for 1/2" to 5/8" drawer material
- Integrated Push to open
- Tool free depth, lateral and height adjustments
- Frame or frameless cabinet applications
- Lifetime warranty, **Made in Italy**

## Accessories

Multi function  
dilling jig



SGD704UGXA

Drawer back drilling



SGD704UGXA

Multi purpose For  
front clip angled



SGD704UGXA

For front clip verticle



SGD704UGXA

Front locking clip, edge



AFCGX3B RH +LH

Front locking clip,  
bottom fixing



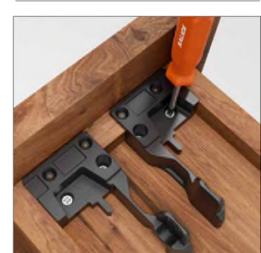
AFCGX3B RH +LH

Front locking clip, vertical fixing



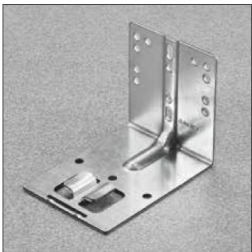
AFCGX43B RH + LH

narrow front locking  
clip



AFCGX43B LH & RH

rear socket standard  
(2")



AGSK7C5B

Narrow rear socket  
(1-1/2")



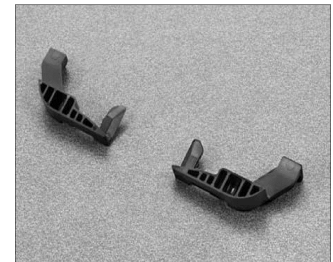
AFCEX43B

Drawer slide spacer block



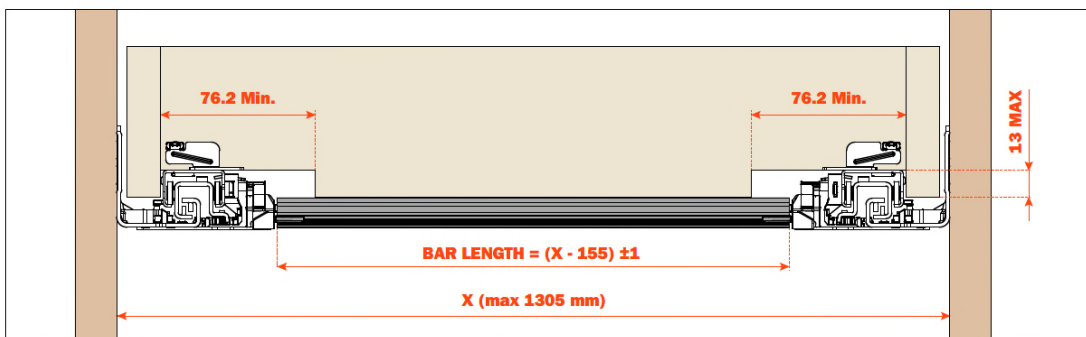
ASPACERFUT

Tilt adjusters



AGLRXX3F

## Synchronizer for Push to open system



Synchronizer Kit

APKF7X51150

For full details, please request a complete F70 technical catalog. CADs available in 2D or 3D on request.