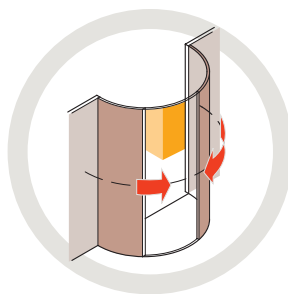
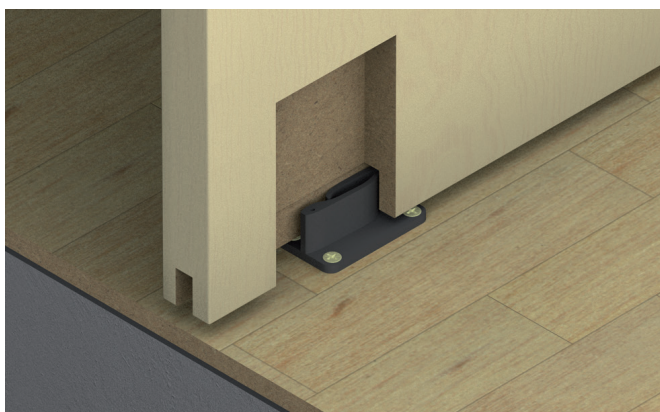
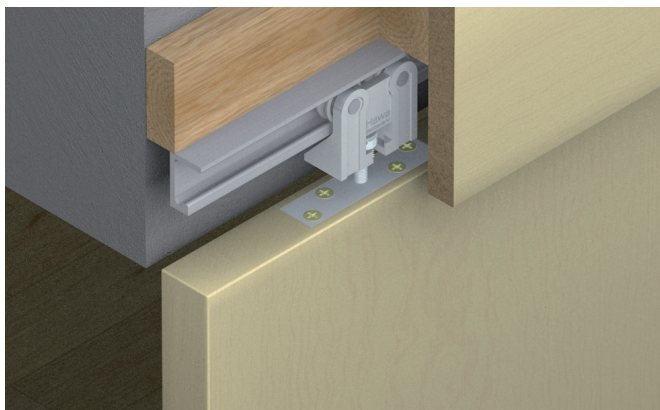
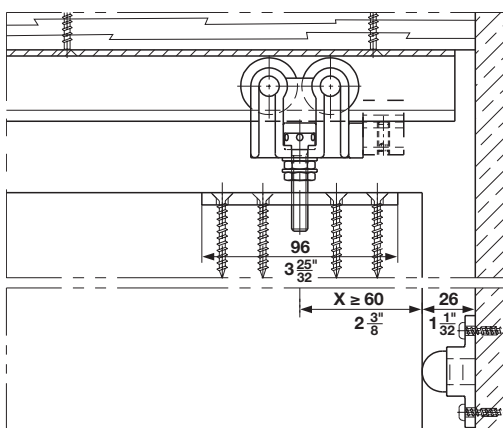
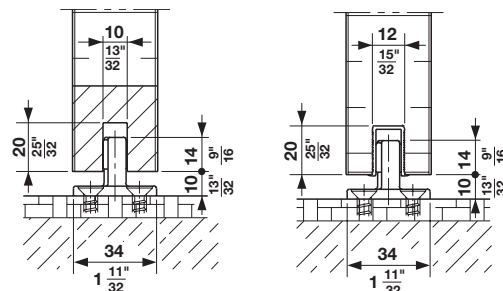
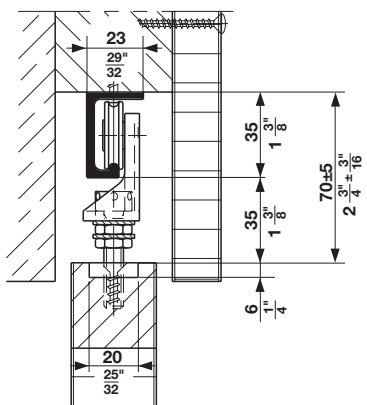


Hawa Media 70

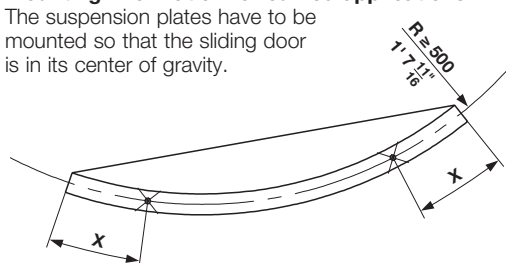


- > For 1 and 2 straight and curved sliding wood doors
- > Door weight: max. 70 kg (154 lbs.)
- > Door thickness: min. 25 mm (31/32")
- > Smooth, quiet operation
- > Outstanding durability
- > Rattle-free bottom guide
- > Nylon tyred ball-bearing wheels
- > Vertically adjustable +/- 5 mm (3/16")



Mounting information for curved applications:

The suspension plates have to be mounted so that the sliding door is in its center of gravity.



Curved applications:

Minimum radius = 500 mm (19 11/16")

Order specifications:

- > Qty. and type of hardware set
- > Sketch/drawing of layout
- > Exact size of radius to centerline of door
- > Type of upper track
- > Curved systems will be quoted per inquiry/order, contact our product specialist at **1-888-437-7477**

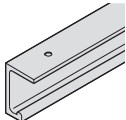

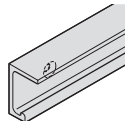
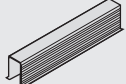
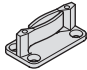
Hawa Media 70 Set

Description	Door weight	Supplied with	Item No.
For 1 sliding door without upper track and lower guide channel	70 kg (154 lbs.)	2 double roller running gears 2 supporting plates with M8 bolt and counter nut 1 rattle-free floor mounted guide 1 wall buffer 1 track stopper	942.17.000

Note

For 2 bi-parting sliding doors, please order 2 sets and 2 track stoppers.

→ Upper Tracks and Accessories

Description		Material	Finish	Length	Item No.
Upper track, pre-drilled ceiling mounted		Aluminum	clear anodized	2.5 m (8' 2 7/16")	942.17.250
				3.5 m (11' 5 13/16")	942.17.350
				6 m (19' 8 1/4")	942.17.600
Track stopper, for stopping bi-parting doors in the middle (2 pcs. required)		Aluminum	anodized	–	942.14.041
Wall mounted upper track		Aluminum	clear anodized	6 m (19' 8 1/4")	942.17.601
Guide rail, glue-in type		Plastic	black	1.3 m (4' 3 1/8")	940.41.130
Floor mounted guide, rattle-free		Plastic	black	–	940.40.031

Dimensional data not binding. Dimensions in mm, inches are approximate. We reserve the right to alter specifications without notice.

Flush pulls	pages 1.394–1.396
Sliding door locks	pages 1.389–1.394
Confort guides	page 1.198
Other lower guide options	page 1.199